

Electrical stimulation promotes nerve growth factor-induced neurite outgrowth and signaling



Yu-Jung Chang^a, Che-Ming Hsu^c, Chia-Hua Lin^a, Michael Shiang-Cheng Lu^{c,*}, Linyi Chen^{a,b,**}

^a Institute of Molecular Medicine, National Tsing Hua University, Hsinchu, Taiwan

^b Department of Medical Science, National Tsing Hua University, Hsinchu, Taiwan

^c Department of Electrical Engineering, National Tsing Hua University, Hsinchu, Taiwan

ARTICLE INFO

Article history:

Received 7 December 2012

Received in revised form 18 March 2013

Accepted 3 April 2013

Available online 12 April 2013

Keywords:

Electrical stimulation
Nerve growth factor
Neurite outgrowth

ABSTRACT

Background: Neurotrophins are important regulators for neural development and regeneration. Nerve growth factor (NGF) therapy has been tested in various models of neural injury and degeneration. However, whether NGF can reach target tissues and maintain effective concentration for a certain period of time remains uncertain. To facilitate neural regeneration, we investigate the possibility of combining NGF and electrical stimulation (ES) in promoting neurite outgrowth, an essential process during neural regeneration.

Methods: PC12 cells were seeded on collagen and indium tin oxide (ITO)-coated area on the transparent conductive devices. Cells were then subjected to the combination of ES and NGF treatment. Neurite outgrowth was compared.

Results: Our findings suggest that ES of 100 mV/mm together with NGF provides optimal effect on neurite outgrowth of PC12 cells. ES increases NGF-induced neurite length but reduces neurite branching, indicative of its primary effect on neurite elongation instead of initiation. One mechanism that ES enhances neurite outgrowth is through increasing NGF-induced phosphorylation of ERK1/2 (pERK1/2) and expression of Egr1 gene. ES has previously been demonstrated to increase the activity of protein kinase C (PKC). Our result indicates that activating PKC further increases NGF-induced pERK1/2 and thus neurite outgrowth.

Conclusion: It is likely that ES promotes NGF-induced neurite outgrowth through modulating the activity of ERK1/2.

General significance: Findings from this study suggest that combining ES and NGF provides a promising strategy for promoting neurite outgrowth.

© 2013 Elsevier B.V. All rights reserved.

1. Introduction

In response to nerve injury, a series of cellular events are induced, including signaling from damaged site, recruitment of macrophage, increased synthesis of neurotrophins and regeneration of nerve fibers. To regenerate damaged or degenerating neurons, inducing neuronal differentiation and maintaining neuronal survival are essential processes. During neuronal differentiation, neurite outgrowth is an early and essential process. Various pharmacological treatments have been used to induce neurite outgrowth — one of these is the use of neurotrophins [1–5]. Neurotrophins are a family of closely related proteins that regulate many aspects of development, survival, maintenance and function

of neurons. For a subset of neurons, including sympathetic neurons, nerve growth factor (NGF) is the main neurotrophin that induces neurite outgrowth and is required for the maintenance of neuronal phenotype. Upon binding to its cell surface receptor TrkA, NGF–TrkA complexes initiate the transmission of extracellular cues to intracellular signaling pathways and eventually turn on genes required for neuronal differentiation. These signaling pathways include activation of mitogen-activated protein kinase (MAPK) cascades, phosphatidyl inositol-3-kinase (PI3K) stimulation of AKT and phospholipase C γ (PLC γ)-dependent generation of inositol triphosphate (IP₃) and diacylglycerol (DAG) resulting in mobilization of Ca²⁺ stores and activation of Ca²⁺-responsive proteins. Extracellular signal-regulated kinase 1/2 (ERK1/2) belongs to MAPK family [6–10]. In response to NGF stimulation, ERK1/2 is phosphorylated by MEK (MAPK kinase) leading to induction of genes responsible for various cellular functions, including cell proliferation, differentiation and migration. Meanwhile, NGF-induced phosphorylation of PI3K results in increased AKT activity which has been well-documented to affect neuronal survival. More recently, AKT has also been regarded as an important mediator of several aspects of neurite outgrowth, including elongation, branching and caliber. Based

* Corresponding to: M.S.-C. Lu, Department of Electrical Engineering National Tsing Hua University, Taiwan. Tel.: 886 3 516 2220.

** Correspondence to: L. Chen, Institute of Molecular Medicine and Department of Medical Science, National Tsing Hua University, 101, Section 2, Kuang-Fu Road, Hsinchu 30013, Taiwan. Tel.: +886 3 5742775; fax: +886 3 5715934.

E-mail addresses: sclu@ee.nthu.edu.tw (M.S.-C. Lu), lchen@life.nthu.edu.tw, lincy@gmail.com (L. Chen).

on the positive effects of NGF on neurite outgrowth and survival, various animal studies and clinical trials of NGF therapy for nerve injury and neurodegenerative diseases have been initiated [11–14].

Another venue to promote neurite outgrowth is through electrical stimulation (ES), which also represents a less-invasive or non-invasive approach. A number of *in vivo* and *in vitro* studies have shown promise of ES in neurite extension and regeneration of transected nerve ends [15–19]. Although the exact mechanisms by which ES enhances nerve regeneration are not well understood, some cellular responses induced by ES have been reported. These responses include neurite outgrowth, induction of neuronal tubulin, neurofilament 200, and *c-fos* gene expression [16,20]. Activation of protein kinase C (PKC) and Ca^{2+} mobilization are shown to be early response by ES [21–29]. However, it remains to be determined exactly what signaling pathways are initiated and are responsible for neurite outgrowth by ES.

While most of the data support a positive role of NGF in neurite outgrowth, the concentration gradient of applied NGF may exert adverse effect on other cell types. Moreover, local NGF treatment is not optimal for long-range regeneration of damaged nerve and long period of treatment using NGF raises an issue of medical cost [3–5,30–33]. Thus, investigating combination of NGF therapy with

other approach to promote neurite outgrowth is of great interest. In this study, we examine whether ES would corroborate with NGF to promote neurite outgrowth of PC12 cells. We also determine whether different strengths of ES would affect NGF-induced neurite initiation, elongation and branching using PC12 cells as a model system. PC12 cell line is established as a noradrenergic clonal cell line that can be differentiated into sympathetic neurons in response to NGF [34]. We further examine the possibility that ES-activated pathways may converge with NGF-induced signaling pathways to promote neurite outgrowth.

2. Material and methods

2.1. Reagents

Anti-ERK1/2 and bovine serum albumin (BSA), phorbol 12-myristate 13 acetate (PMA) and chelerythrine were purchased from Sigma (S. Louis, MO). Anti-pERK1/2(Thr202, Tyr204), anti-AKT, anti-pAKT(S473), anti-pSTAT3(S727), and anti-STAT3 were purchased from Cell Signaling (Danvers, MA). Anti-Egr1 was purchased from Santa Cruz Biotechnology (Santa Cruz, CA). IRDye800W-labeled anti-rabbit secondary antibody was from LI-COR Biosciences (Lincoln,

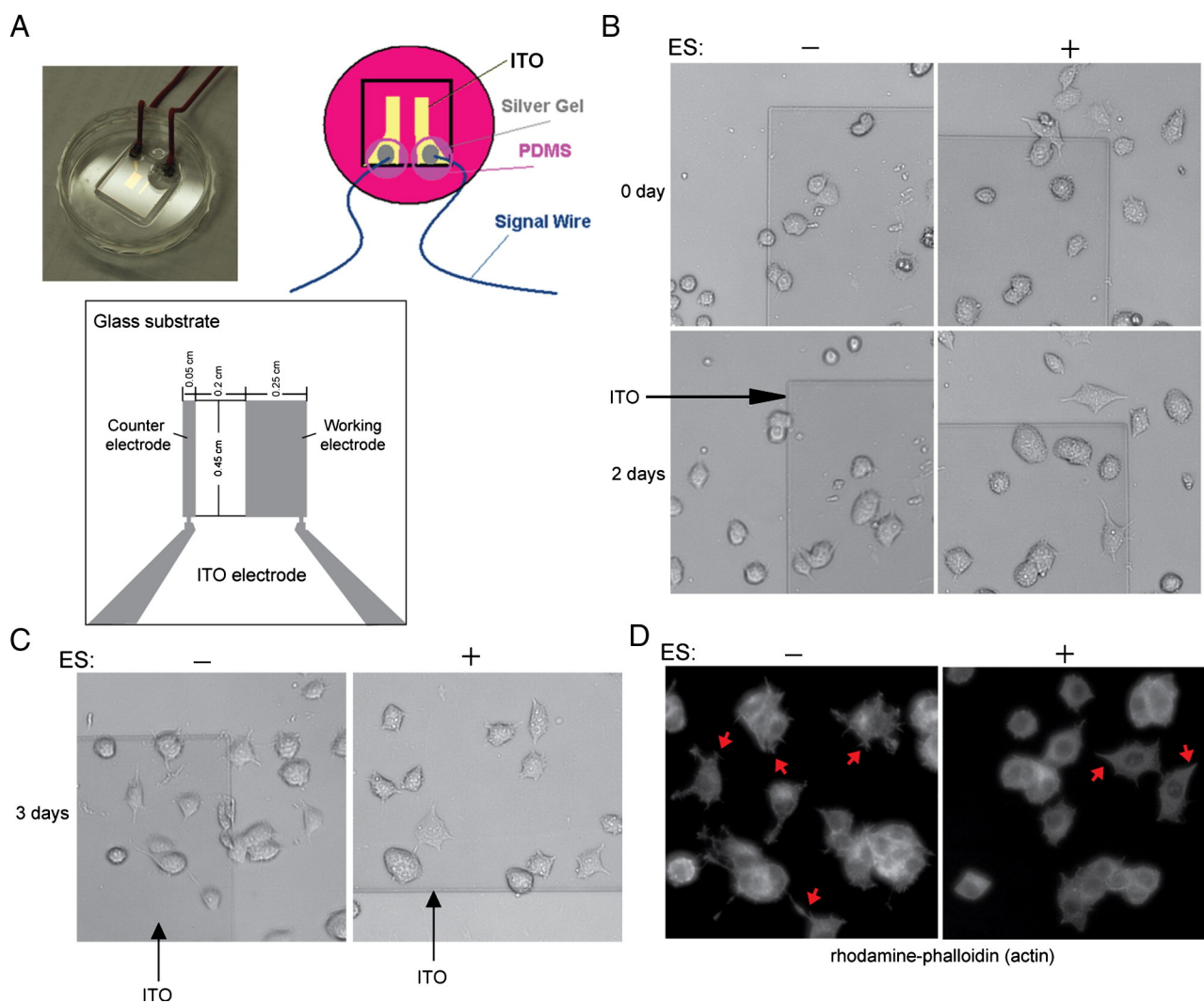


Fig. 1. Electrical stimulation alone is not sufficient to induce neurite outgrowth of PC12 cells. (A) Diagram of designed ITO chip for ES. Indium tin oxide (ITO) electrodes of 0.1 μm in thickness were separated by 2 mm and coated on glass. ES was performed by using transparent electrodes fabricated on glass substrates to facilitate observation with an inverted microscope. Cells were cultured on ITO-coated area. (B) PC12 cells were treated without (–) or with (+) electric field of 100 mV/mm for 0–2 days. Live cell images are shown. Dark shaded area is ITO-coated. (C) PC12 cells were treated without (–) or with (+) 100 mV/mm ES for 3 days. Live cell images are shown. (D) Cells were treated as in (C), fixed and incubated with rhodamine phalloidin to visualize actin filaments. Red arrows indicate filopodia.

NE). Alexa Fluor 700 goat anti-mouse secondary antibody, Alexa Fluor 488 secondary antibody, and rhodamine phalloidin were from Invitrogen (Carlsbad, CA). NGF and rat-tail collagen I were purchased from BD Bioscience (Bedford, MA). Anti-neuronal tubulin (Tuj1) antibody was purchased from Covance (Richmond, CA). Protein Assay Kit (Cat# PAK500) was purchased from Strong Biotech Corporation, Taiwan. Paraformaldehyde (PFA) 16% was purchased from Electron Microscopy Sciences.

2.2. Cell culture

The PC12 cells were purchased from American Type Culture Collection. PC12 cells were seeded on the collagen-coated dish (coated with 0.1 mg/ml rat-tail collagen in 0.02 N acetic acid) and maintained in complete medium, DMEM supplemented with 10% heat-inactivated horse serum (HS), 5% fetal bovine serum (FBS), 1% L-glutamine (L-Gln) and 1% antibiotic–antimycotic (AA) (Invitrogen) under 10% CO₂ at 37 °C condition. Before treatment of NGF or ES, cells were deprived in serum-free media for 8 to 16 h. The serum-free media was the DMEM supplemented with 1% BSA, 1% L-Gln and 1% AA.

2.3. Electrical stimulation and microscopy

ES was performed by using transparent conductive devices designed and manufactured in Department of Electrical Engineering, National Tsing Hua University. The electrodes were fabricated on borosilicate glass to facilitate observation with an inverted microscope. Indium tin

oxide (ITO) of 0.1 μm in thickness was deposited by radio frequency (RF) sputtering and patterned by the lift-off technique to form electrodes separated by 2 mm. Metal wires were then glued to the pads by silver paste. The bio-compatible polydimethylsiloxane (PDMS) was used to attach the glass chip in a 3.5-cm Petri dish and reinforce the wire connection. PDMS was used because of its low toxicity to cells. To evaluate neurite outgrowth, various amplitudes of ES were applied to cells via a function generator (Agilent Technologies, Taipei, Taiwan).

PC12 cells were seeded on collagen and ITO-coated area on the chips and maintained in complete medium 24 h. After 24 h, cells were deprived in serum-free medium for overnight. PC12 cells were subjected to sinusoidal stimulation potential of 100 mV, 200 mV or 400 mV alternating current, peak-to-peak, with a frequency of 100 Hz for 2 h, followed by the addition of NGF. The distance of two electrodes was 2 mm, so the electric field generated was 50, 100 or 200 mV/mm. Images were taken using Carl Zeiss Observer Z1 microscope. Neurite length of PC12 cells was measured using ImageJ software. The longest neurite of each cell was compared. The definition of attachment point is the number of neurites connected to the soma and the endpoint is the number of the neurite tips.

2.4. Immunoblotting

Cell lysates were collected in RIPA buffer (50 mM Tris, pH 7.5, 1% Triton X-100, 150 mM NaCl, 2 mM EGTA) containing with 1 mM Na₃VO₄, 1 mM phenylmethanesulphonyl fluoride (PMSF), 10 ng/ml aprotinin and 10 ng/ml leupeptin. Protein concentration of each

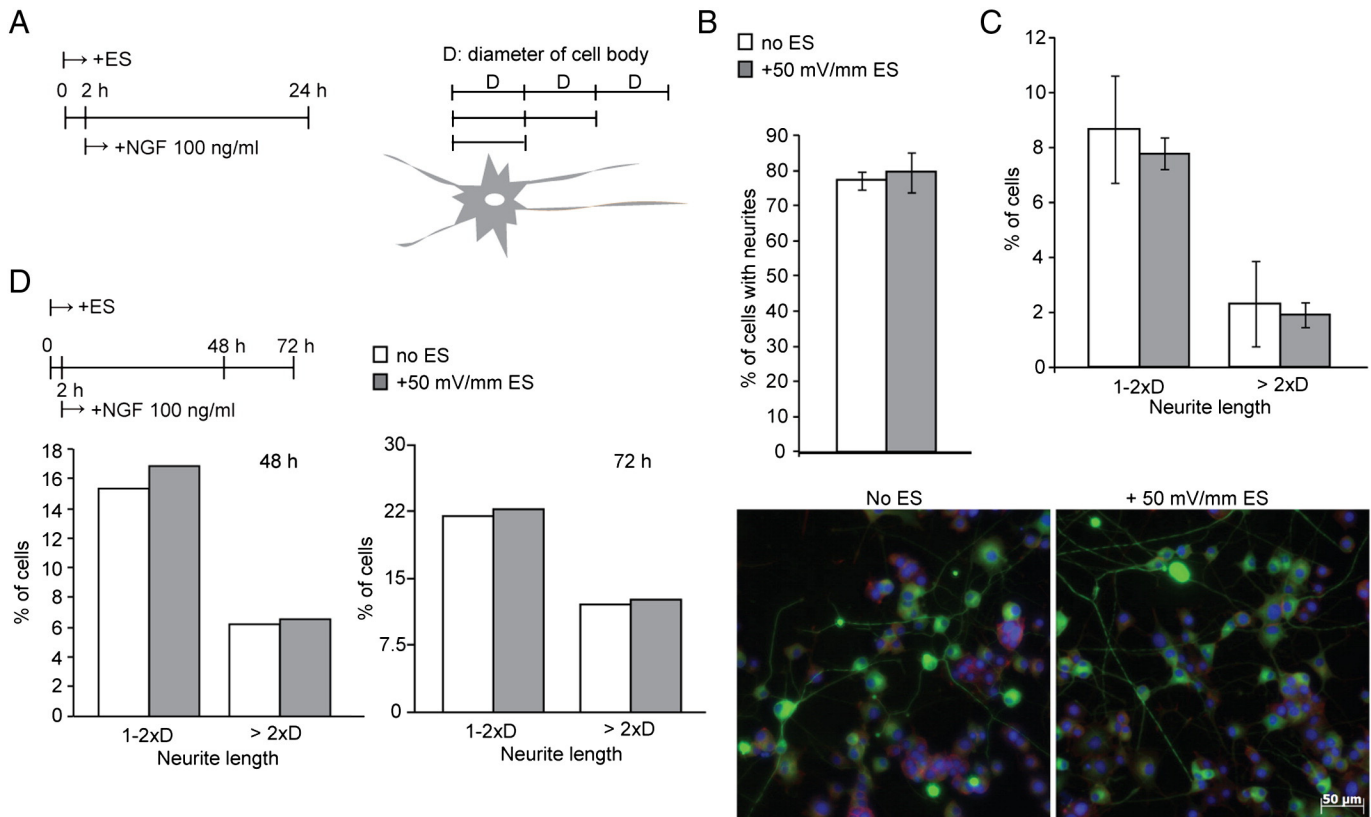


Fig. 2. 50 mV/mm electrical stimulation did not enhance NGF-induced neurite outgrowth. (A) PC12 cells were subjected to 50 mV/mm ES for 2 h before adding 100 ng/ml NGF for additional 22 h. As a control, PC12 cells were treated with 100 ng/ml NGF for 22 h. (B) Percentages of cells bearing filopodia (short protrusion or process) or neurites are shown. (C) Percentage of cells with various lengths of neurites (1–2xD or >2xD) is compared. 400–550 cells were counted per experiment. Values are mean ± S.E.M. from four independent experiments. (D) PC12 cells were subjected to 50 mV/mm ES for 2 h before adding 100 ng/ml NGF. Percentage of cells with neurite length of 1–2xD or >2xD is compared. 800–900 cells were counted per experiment. Cells were fixed and incubated with rhodamine phalloidin to visualize actin filaments (red), DAPI to visualize the nucleus (blue) or anti-neuronal tubulin (Tuj1) antibody followed by Alexa Fluor 488 secondary antibody (green) for immunofluorescence staining.

sample was determined by protein assay kit using Bradford method. The samples with equal amount of protein were separated by sodium dodecyl sulfate-polyacrylamide gel electrophoresis (SDS-PAGE) and immunoblotted with the indicated antibodies. The immunoblots were subsequently detected using IRDye-conjugated IgG and the Odyssey Infrared Imaging System.

2.5. Immunofluorescence staining

Cells were treated without or with ES and fixed by 4% paraformaldehyde, permeabilized by 0.1% of Triton X-100, and incubated with anti-neuronal tubulin (Tuj1) antibodies, followed by incubation with the Alexa Fluor 488 secondary antibody, rhodamine phalloidin (for actin visualization) and DAPI (for visualizing the nucleus). Images were taken using Carl Zeiss Observer Z1 microscope.

2.6. Statistical analysis

The statistical analysis of differentiation percentage, attachment points, endpoints and immunoblotting quantification were performed using one-way ANOVA. Significance (*) is defined as $P < 0.05$.

3. Results and discussion

3.1. Electrical stimulation is not sufficient to induce neurite outgrowth

ES has previously been suggested to induce cellular protrusion/process or neurite outgrowth of PC12 cells [20,35]. We re-visited the effect of ES on neurite outgrowth. To this end, we have designed a transparent indium tin oxide (ITO) conductive device with electrodes of 2 mm apart on a borosilicate glass placing in culture dishes (see [Materials and methods](#)) for growing cells and imaging live cells using inverted microscope (Fig. 1A). ITO was used because of its electrical conductivity and it can be deposited as a thin film for convenient electrode design. To determine whether ES could induce neurite outgrowth of PC12 cells, PC12 cells were seeded on collaged-coated ITO chip dishes then treated with or without ES of 100 mV/mm for 2–3 days (Fig. 1B–C). As shown in Fig. 1B, ES alone was not sufficient to induce neurite outgrowth of PC12 cells. Morphologically, some cells had more spikes than others, but these cellular protrusions/processes/filopodia are not necessary neurites. To form stable neurites, the length of neurites needs to be at least the diameter of cell body. Morphological spikes of less than one cell body (small filopodia-like protrusion of cellular process) cannot be considered as neurites. Nonetheless, actin-rich filopodia are known to precede the formation of neurites [36,37]. Using rhodamine phalloidin staining to label actin, filopodia were identified. As shown in Fig. 1D, we did not find ES of 100 mV/mm affect filopodia or neurite outgrowth of PC12 cells.

3.2. Effect of electrical stimulation enhances NGF-induced neurite outgrowth

NGF is known to induce neuronal differentiation of PC12 cells. We next determined whether ES would affect NGF-induced neurite outgrowth during differentiation of PC12 cells. From our previous experience, NGF exerts its effects very fast. To avoid effect of ES masked by NGF action, we subjected cells to ES 2 h before the addition of NGF to culture medium in the following experiments. PC12 cells were electrically stimulated with 50 mV/mm for 2 h before adding 100 ng/ml NGF for 22 h with continuous ES. As a control, cells were treated with NGF without ES for 22 h (Fig. 2A, left panel). For measurement purpose, we define the diameter of cell body as D , and compared percentages of cells with neurites, cells with neurite length between 1 and 2 times ($1-2xD$) the diameter of cell body, and cells with neurites at least twice the diameter of cell body ($>2xD$)

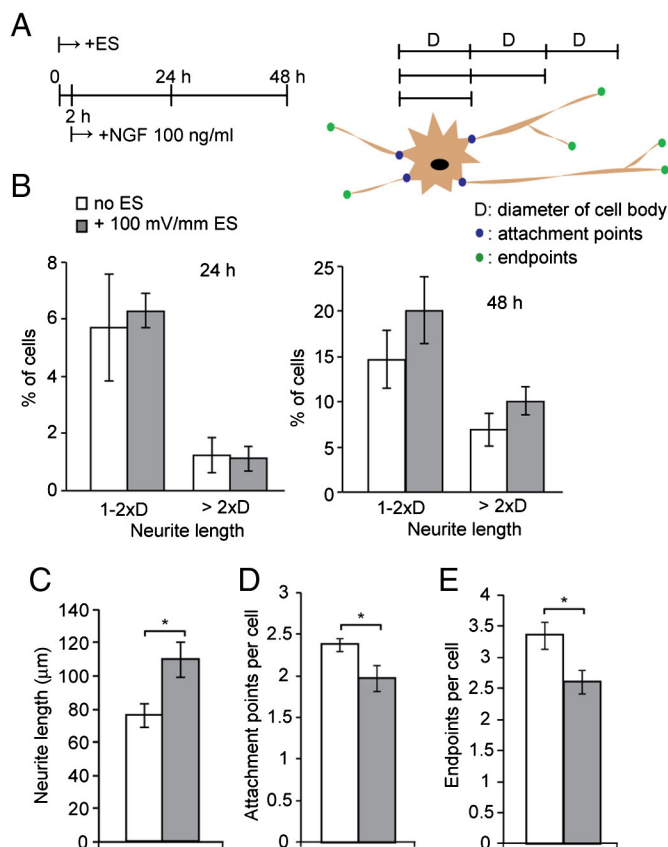


Fig. 3. 100 mV/mm electrical stimulation enhances NGF-induced neurite elongation of PC12 cells. (A) PC12 cells were subjected to 100 mV/mm ES 2 h before adding 100 ng/ml NGF for 22 or 46 h. As a control, PC12 cells were treated with 100 ng/ml NGF for 22 or 46 h. Neurite length was calculated and compared. Attachment points and endpoints were counted. (B) Percentages of cells with neurite length of $1-2xD$ or $>2xD$ in either condition were calculated. 600–900 cells were counted per experiment. Values are mean \pm S.E.M. from four independent experiments. (C) Averaged neurite length (C), attachment points (D) and endpoints (E) per cell were measured from three independent experiments. 70–100 cells were counted per experiment. Values are mean \pm S.E.M. (*: $P < 0.05$, one-way ANOVA).

(Fig. 2A, right panel). As shown in Fig. 2B, 50 mV/mm ES did not enhance 100 ng/ml NGF-induced neurite outgrowth. There is no difference in turns of percentages of cell population with different neurite lengths (Fig. 2C). Longer treatment of 48 or 72 h stimulation was performed with similar results (Fig. 2D). This finding suggests that 50 mV/mm ES is not capable of enhancing NGF-induced neurite outgrowth.

We next examine whether stronger ES would enhance NGF-induced neurite outgrowth of PC12 cells. PC12 cells were stimulated with 100 mV/mm for 2 h before 100 ng/ml NGF addition and continuous ES for 22 or 46 h (Fig. 3A). NGF + ES for 22 h (Fig. 3B, left panel) did not affect the percentages of cells with neurites, whereas NGF + ES for 46 h enhanced percentages of cells with neurites (Fig. 3B, right panel). The averaged neurite length of cells treated with NGF for 46 h was 76 μ m, whereas it was 110 μ m with combined treatment of NGF and ES (Fig. 3C). To understand whether ES affects the number of primary neurites or neurite branches, the numbers of attachment points and endpoints were measured and counted as depicted in the right panel of Fig. 3A. Interestingly, the numbers of attachment points were reduced 17% and endpoints were reduced 24% with 100 mV/mm ES (Fig. 3D–E). Attachment points represent the number of primary neurites extending from soma. Number of endpoints infers to the degree of neurite branching. These two parameters were consistently reduced with ES suggesting that 100 mV/mm

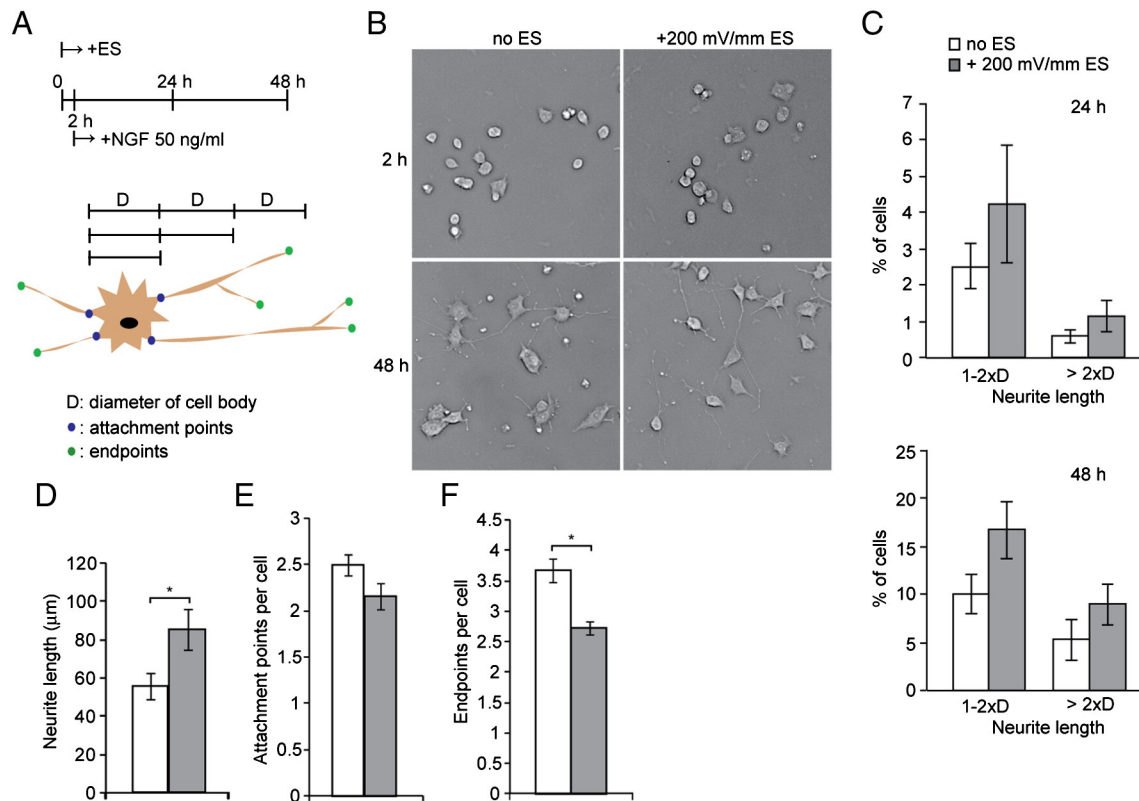


Fig. 4. 200 mV/mm electrical stimulation enhances NGF-induced neurite length, reduces attachment points and endpoints. (A) PC12 cells were subjected to 200 mV/mm ES for 2 h before adding 50 ng/ml NGF for 22 or 46 h. As a control, PC12 cells were treated with 50 ng/ml NGF for 22 or 46 h. (B) Representative live cell images of 2 and 48 h stimulated cells are shown. (C) Percentages of cells with neurite length of 1–2xD or >2xD in each condition were calculated. 350–500 cells were counted per experiment. Averaged neurite length (D), attachment points (E) and endpoints (F) per cell were measured from three independent experiments. 70–100 cells were counted per experiment. Values are mean \pm S.E.M. (*: $P < 0.05$, one-way ANOVA).

enhances neurite elongation instead of initiation. This finding also echoes the result from Fig. 1 that ES alone is not sufficient to initiate neurites. Only when NGF induces neurite initiation, could ES enhance neurite elongation.

One of the problems of NGF therapy in animal studies is the non-target effect of NGF. Reducing concentration of NGF may be beneficial in this regard if higher ES can compensate the trophic effect of NGF. To this end, PC12 cells were stimulated with 50, 100 or 200 mV/mm for 2 h followed by 50 ng/ml NGF treatment with continuous ES for 22 or 46 h. When cells were treated with 50 ng/ml NGF, applying either 50 or 100 mV/mm ES for 22 or 46 h did not result in significant difference of neurite outgrowth (Supplemental Fig. 1S). Combination of 50 ng/ml NGF and ES of 200 mV/mm, on the other hand, enhanced the percentages of PC12 cells with neurites (Fig. 4B). The percentage of cells with 1–2xD or >2xD neurites was increased by ES (Fig. 4C). Averaged neurite length increased 56% with ES compared to control (Fig. 4D). The reduction of attachment points and endpoints was similar to those treated with 100 mV/mm and 100 ng/ml NGF (Figs. 4E–F and 3D–E).

Results from Fig. 3 showed that 100 mV/mm ES increased NGF-induced neurite length approximately 45% (Fig. 3). When NGF concentration was reduced to 50 ng/ml and together with 200 mV/mm stimulation, neurite length increased 56% (Fig. 4). These findings seem to suggest that increasing the strength of ES further increases neurite elongation. However, overall neurite length and percentages of cells with neurites under 200 mV/mm and 50 ng/ml NGF are not better than the condition of 100 mV/mm and 100 ng/ml NGF (Figs. 3–4). This result could potentially due to cellular toxicity caused by 200 mV/mm stimulation.

3.3. Electrical stimulation enhances NGF-induced pERK1/2 level

Several signaling pathways are implicated in NGF-induced neuronal differentiation of PC12 cells, including MEK–ERK1/2, PI3K–AKT pathways, and pathways involve activation of PLC γ , PKC and signal transducers and activators of transcription-3 (STAT3) [38]. To determine whether ES modulates any of these pathways, PC12 cells were treated with or without ES with 50 mV/mm for 2 h followed by NGF treatment (Fig. 5A). Phosphorylations of ERK1/2, AKT and STAT3 were examined via western blotting. As shown in Fig. 5B–C, ES enhanced NGF-induced pERK1/2 level approximately 40% but did not change pSTAT3(S727) and pAKT(S473) levels, compared to those without ES. This result raises a possibility that ES may enhance NGF-induced neuronal differentiation through regulating MEK–ERK1/2 pathway. We thus examined whether different amplitudes of ES differentially affects MEK–ERK1/2 pathway. To this end, PC12 cells were stimulated with 0, 50 or 100 mV/mm for 2 h before NGF addition for 22 h. As shown in Fig. 5D, 50 mV/mm ES increased 40%, whereas 100 mV/mm ES increased 70%, of NGF-induced pERK1/2 level compared to no ES controls. Similarly, PC12 cells subjected to 200 mV/mm stimulation also increased NGF-induced pERK1/2 level compared to no ES controls (Fig. 5D, right panels). Moreover, 100 mV/mm ES enhanced NGF-induced expression of early growth response protein 1 (Egr1), a downstream effector of MEK–ERK1/2 pathway (Fig. 5E). Taken together, these results provide important insights that ES synergistically enhances NGF-induced MEK/ERK1/2–Egr1 pathway to promote neurite outgrowth.

ES has previously been suggested to regulate neurite outgrowth through regulating PKC activity [21,22]. To investigate whether

activating PKC would synergistically promote NGF-induced pERK1/2, PC12 cells were pretreated with or without PKC activator, PMA, followed by the addition of NGF. As shown in Fig. 6A, activating PKC enhanced NGF-induced pERK1/2 level more than 2-fold. Consistent with a previous study showing that PKC inhibitor blocked the effect of ES but not NGF [20], our result also showed that treating cells with PKC inhibitor, chelerythrine, did not affect NGF-induced pERK1/2 (Fig. 6B). It is thus likely that ES activates PKC to enhance NGF-induced MEK–ERK1/2 signaling, gene expression and thus neurite outgrowth (Fig. 6C).

4. Conclusion

In this study, we explore the strategy of combining NGF and ES on promoting neurite outgrowth. Our results demonstrate that ES promotes NGF-induced neurite elongation. Among the conditions we have tested, combining 100 mV/mm ES and 100 ng/ml NGF provides the optimal effect on neurite outgrowth and percentage of cells with neurites (Fig. 3). We further demonstrate that ES enhances NGF-induced signaling and gene expression, specifically MEK–ERK1/2 pathway and Egr1 expression (Fig. 5). While ES robustly activates PKC as suggested by several studies [21,22], we find that activation of PKC leads to enhancement of NGF-induced pERK1/2. These findings provide important insights into how ES may regulate NGF-induced signaling and gene expression to promote neurite outgrowth. The protocol used in this study could potentially be considered for treatment of neurodegeneration or nerve injury.

Supplementary data to this article can be found online at <http://dx.doi.org/10.1016/j.bbagen.2013.04.007>.

Acknowledgements

This study was supported by grants from the National Science Council of Taiwan (NSC101-2311-B-007-012-MY3 and NSC101-2311-B-007-001), National Health Research Institutes (NHRI-EX102-10206NI) and the National Tsing Hua University (102N2747E1 and 102N2760E1).

References

- [1] A. Blesch, H.S. Uy, N. Diergardt, M.H. Tuszynski, Neurite outgrowth can be modulated in vitro using a tetracycline-repressible gene therapy vector expressing human nerve growth factor, *J. Neurosci. Res.* 59 (2000) 402–409.
- [2] R.M. Lindsay, Trophic protection of motor neurons: clinical potential in motor neuron diseases, *J. Neurol.* 242 (1994) S8–S11.
- [3] F. Hefti, Neurotrophic factor therapy for nervous system degenerative diseases, *J. Neurobiol.* 25 (1994) 1418–1435.
- [4] S.B. Rangasamy, K. Soderstrom, R.A. Bakay, J.H. Kordower, Neurotrophic factor therapy for Parkinson's disease, *Prog. Brain. Res.* 184 (2010) 237–264.
- [5] F. Hefti, M.P. Armanini, K.D. Beck, I.W. Caras, K.S. Chen, P.J. Godowski, L.J. Goodman, R.G. Hammonds, M.R. Mark, P. Moran, M.C. Nishimura, H.S. Phillips, A. Shih, J. Valverde, J.W. Winslow, Development of neurotrophic factor therapy for Alzheimer's disease, *CIBA Found. Symp.* 196 (1996) 54–63, (discussion 63–59).
- [6] D. Vaudry, P.J. Stork, P. Lazarovici, L.E. Eiden, Signaling pathways for PC12 cell differentiation: making the right connections, *Science* 296 (2002) 1648–1649.
- [7] L.J. Klesse, L.F. Parada, Trks: signal transduction and intracellular pathways, *Microsc. Res. Tech.* 45 (1999) 210–216.
- [8] E.J. Huang, L.F. Reichardt, Trk receptors: roles in neuronal signal transduction, *Annu. Rev. Biochem.* 72 (2003) 609–642.
- [9] A. Patapoutian, L.F. Reichardt, Trk receptors: mediators of neurotrophin action, *Curr. Opin. Neurobiol.* 11 (2001) 272–280.
- [10] D.R. Kaplan, R.M. Stephens, Neurotrophin signal transduction by the Trk receptor, *J. Neurobiol.* 25 (1994) 1404–1417.

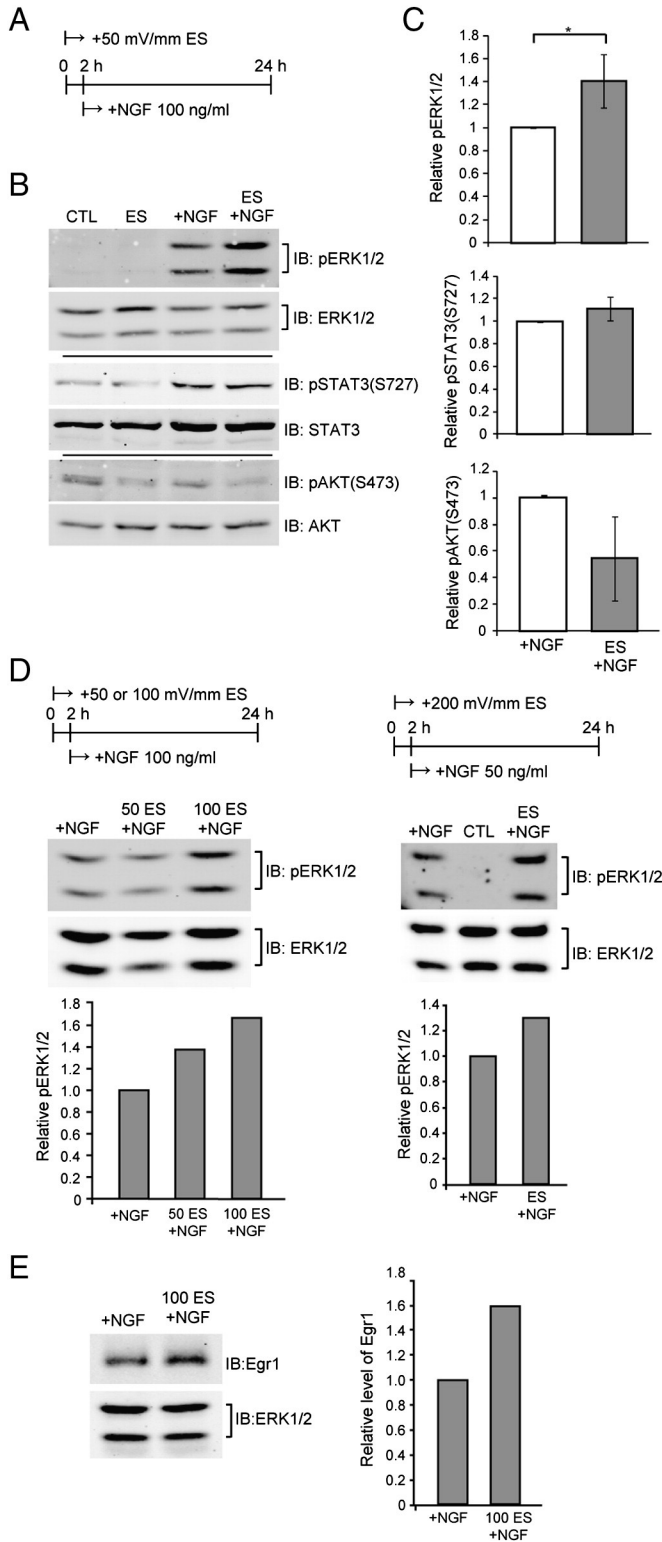


Fig. 5. Electrical stimulation enhances NGF-induced pERK1/2. (A) PC12 cells were subjected to 50 mV/mm ES for 2 h before adding 100 ng/ml NGF for 22 h with continuous ES. As a control, PC12 cells were treated with 100 ng/ml NGF for 22 h. (B) Cells were treated as in (A), cell lysates were collected and equal amount of proteins was separated by SDS-PAGE and immunoblotted with anti-pERK1/2, ERK1/2, pSTAT3(S727), STAT3, pAKT(S473) and AKT antibodies. Representative blots are shown from three independent experiments. (C) Relative levels of pERK1/2, pSTAT3(S727) and pAKT(S473) were normalized to total ERK1/2, STAT3, and AKT levels and compared to NGF only group (defined as 1, white bars). Values are mean \pm S.E.M. from three independent experiments. (*: $P < 0.05$, one-way ANOVA). (D) PC12 cells were subjected to 50 or 100 mV/mm ES for 2 h before adding 100 ng/ml NGF for 22 h with or without continuous ES. Cell lysates were collected and equal amount of proteins was separated by SDS-PAGE and immunoblotted with anti-pERK1/2 and ERK1/2 antibodies. Levels of pERK1/2 were normalized to total ERK1/2 levels and compared to NGF-only group (defined as 1). PC12 cells were subjected to 200 mV/mm ES for 2 h before adding 50 ng/ml NGF for 22 h with or without continuous ES. As a control, PC12 cells were treated with 50 ng/ml NGF for 22 h. Cell lysates were collected and equal amount of proteins was separated by SDS-PAGE and immunoblotted with anti-pERK1/2 and ERK1/2 antibodies. Levels of pERK1/2 were normalized to total ERK1/2 levels and compared to NGF-only group (defined as 1). (E) PC12 cells were subjected to 100 mV/mm ES for 2 h before adding 100 ng/ml NGF for 2 h with or without ES. Cell lysates were collected and equal amount of proteins was separated by SDS-PAGE and immunoblotted with anti-Egr1 antibody. Relative levels of Egr1 were normalized to total ERK1/2 levels and compared to NGF-only group (defined as 1).

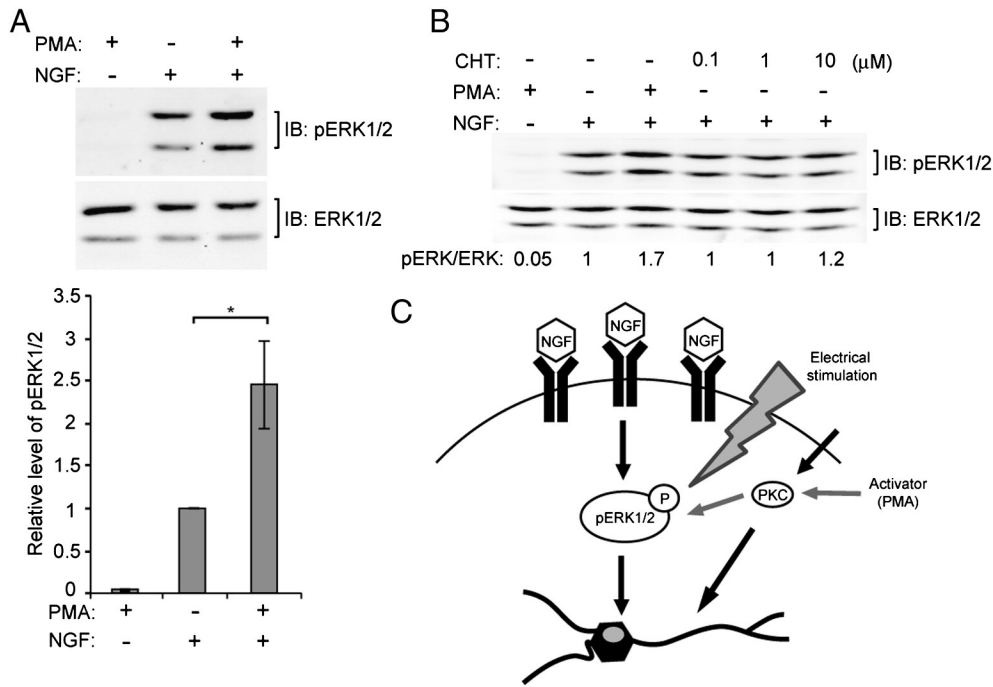


Fig. 6. Activated PKC involves in NGF-induced pERK1/2. (A) PC12 cells were pre-treated with or without 162 nM PMA for 1 h, followed by 100 ng/ml NGF stimulation for 10 min. Cell lysates were collected and equal amount of proteins was separated by SDS-PAGE and immunoblotted with anti-pERK1/2 and ERK1/2 antibodies. Representative blots are shown from three independent experiments. Levels of pERK1/2 were normalized to levels of total ERK1/2 and then compared to NGF-treated group (defined as 1). Values are mean \pm S.E.M. (*: $P < 0.05$, one-way ANOVA). (B) PC12 cells were pre-treated with 162 nM PMA or the indicated concentration of CHT (chelerythrine) for 1 h, followed by 100 ng/ml NGF stimulation for 10 min. Cell lysates were analyzed by western blotting as in (A). The relative level of pERK1/2 was normalized to total ERK1/2 and ratio of pERK/ERK was shown at the bottom of the blots. (C) Working model. NGF activates MAPK-ERK1/2 pathway to induce neuronal differentiation of PC12 cells. ES was previously shown to activate PKC pathway to regulate neurite outgrowth. We show that activating PKC by PMA enhances NGF-induced pERK1/2 and likely contributes to enhanced neurite outgrowth.

- [11] I. Mocchi, J.R. Wrathall, Neurotrophic factors in central nervous system trauma, *J. Neurotrauma* 12 (1995) 853–870.
- [12] A. Blesch, M. Tuszynski, Ex vivo gene therapy for Alzheimer's disease and spinal cord injury, *Clin. Neurosci.* 3 (1995) 268–274.
- [13] M.H. Tuszynski, L. Thal, M. Pay, D.P. Salmon, H.S.U. R. Bakay, P. Patel, A. Blesch, H.L. Vahlsing, G. Ho, G. Tong, S.G. Potkin, J. Fallon, L. Hansen, E.J. Mufson, J.H. Kordower, C. Gall, J. Conner, A phase 1 clinical trial of nerve growth factor gene therapy for Alzheimer disease, *Nat. Med.* 11 (2005) 551–555.
- [14] M.H. Tuszynski, R. Grill, L.L. Jones, H.M. McKay, A. Blesch, Spontaneous and augmented growth of axons in the primate spinal cord: effects of local injury and nerve growth factor-secreting cell grafts, *J. Comp. Neurol.* 449 (2002) 88–101.
- [15] J.M. Kerns, A.J. Fakhouri, H.P. Weinrib, J.A. Freeman, Electrical stimulation of nerve regeneration in the rat: the early effects evaluated by a vibrating probe and electron microscopy, *Neuroscience* 40 (1991) 93–107.
- [16] J.S. Park, K. Park, H.T. Moon, D.G. Woo, H.N. Yang, K.H. Park, Electrical pulsed stimulation of surfaces homogeneously coated with gold nanoparticles to induce neurite outgrowth of PC12 cells, *Langmuir* 25 (2009) 451–457.
- [17] A.D. McClellan, M.O. Kovalenko, J.A. Benes, D.J. Schulz, Spinal cord injury induces changes in electrophysiological properties and ion channel expression of reticulospinal neurons in larval lamprey, *J. Neurosci.* 28 (2008) 650–659.
- [18] M. Wood, R.K. Willits, Short-duration, DC electrical stimulation increases chick embryo DRG neurite outgrowth, *Bioelectromagnetics* 27 (2006) 328–331.
- [19] E. Udina, M. Furey, S. Busch, J. Silver, T. Gordon, K. Fouad, Electrical stimulation of intact peripheral sensory axons in rats promotes outgrowth of their central projections, *Exp. Neurol.* 210 (2008) 238–247.
- [20] K. Kimura, Y. Yanagida, T. Haruyama, E. Kobatake, M. Aizawa, Gene expression in the electrically stimulated differentiation of PC12 cells, *J. Biotechnol.* 63 (1998) 55–65.
- [21] G.T. Somogyi, W.C. de Groat, Function, signal transduction mechanisms and plasticity of presynaptic muscarinic receptors in the urinary bladder, *Life Sci.* 64 (1999) 411–418.
- [22] T.A. Brosenitsch, D.M. Katz, Physiological patterns of electrical stimulation can induce neuronal gene expression by activating N-type calcium channels, *J. Neurosci.* 21 (2001) 2571–2579.
- [23] W. Wenjin, L. Wenchao, Z. Hao, L. Feng, W. Yan, S. Wodong, F. Xianqun, D. Wenlong, Electrical stimulation promotes BDNF expression in spinal cord neurons through Ca(2+)- and Erk-dependent signaling pathways, *Cell. Mol. Neurobiol.* 31 (2011) 459–467.
- [24] R. Zhao, L. Liu, A.R. Rittenhouse, Ca2+ influx through both L- and N-type Ca2+ channels increases c-fos expression by electrical stimulation of sympathetic neurons, *Eur. J. Neurosci.* 25 (2007) 1127–1135.
- [25] M. Yamada, K. Tanemura, S. Okada, A. Iwanami, M. Nakamura, H. Mizuno, M. Ozawa, R. Ohyama-Goto, N. Kitamura, M. Kawano, K. Tan-Takeuchi, C. Ohtsuka, A. Miyawaki, A. Takashima, M. Ogawa, Y. Toyama, H. Okano, T. Kondo, Electrical stimulation modulates fate determination of differentiating embryonic stem cells, *Stem Cells* 25 (2007) 562–570.
- [26] S. Manivannan, S. Terakawa, Rapid sprouting of filopodia in nerve terminals of chromaffin cells, PC12 cells, and dorsal root neurons induced by electrical stimulation, *J. Neurosci.* 14 (1994) 5917–5928.
- [27] P. Andine, I. Jacobson, H. Hagberg, Calcium uptake evoked by electrical stimulation is enhanced postschemically and precedes delayed neuronal death in CA1 of rat hippocampus: involvement of N-methyl-D-aspartate receptors, *J. Cereb. Blood Flow Metab.* 8 (1988) 799–807.
- [28] C. Eyzaguirre, H. Koyano, Effects of electrical stimulation on the frequency of chemoreceptor discharges, *J. Physiol.* 178 (1965) 438–462.
- [29] M. Chiquet, J.G. Nicholls, Neurite outgrowth and synapse formation by identified leech neurons in culture, *J. Exp. Biol.* 132 (1987) 191–206.
- [30] A. Shakhbazov, J.A. Martinez, Q.G. Xu, J. Kawasoe, J. van Minnen, R. Midha, Evidence for a systemic regulation of neurotrophin synthesis in response to peripheral nerve injury, *J. Neurochem.* 122 (2012) 501–511.
- [31] S.T. Lim, M. Airavaara, B.K. Harvey, Viral vectors for neurotrophic factor delivery: a gene therapy approach for neurodegenerative diseases of the CNS, *Pharmacol. Res.* 61 (2010) 14–26.
- [32] T. Yasuhara, C.V. Borlongan, I. Date, Ex vivo gene therapy: transplantation of neurotrophic factor-secreting cells for cerebral ischemia, *Front. Biosci.* 11 (2006) 760–775.
- [33] S.C. Apfel, Neurotrophic factor therapy—prospects and problems, *Clin. Chem. Lab. Med.* 39 (2001) 351–355.
- [34] L.A. Greene, A.S. Tischler, Establishment of a noradrenergic clonal line of rat adrenal pheochromocytoma cells which respond to nerve growth factor, *Proc. Natl. Acad. Sci. U. S. A.* 73 (1976) 2424–2428.
- [35] K. Kimura, Y. Yanagida, T. Haruyama, E. Kobatake, M. Aizawa, Electrically induced neurite outgrowth of PC12 cells on the electrode surface, *Med. Biol. Eng. Comput.* 36 (1998) 493–498.
- [36] E.W. Dent, A.V. Kwiatkowski, L.M. Mebane, U. Philippar, M. Barzik, D.A. Rubinson, S. Gupton, J.E. Van Veen, C. Furman, J. Zhang, A.S. Alberts, S. Mori, F.B. Gertler, Filopodia are required for cortical neurite initiation, *Nat. Cell Biol.* 9 (2007) 1347–1359.
- [37] M.D. Brown, B.J. Cornejo, T.B. Kuhn, J.R. Bamberg, Cdc42 stimulates neurite outgrowth and formation of growth cone filopodia and lamellipodia, *J. Neurobiol.* 43 (2000) 352–364.
- [38] Y.P. Ng, Z.H. Cheung, N.Y. Ip, STAT3 as a downstream mediator of Trk signaling and functions, *J. Biol. Chem.* 281 (2006) 15636–15644.